

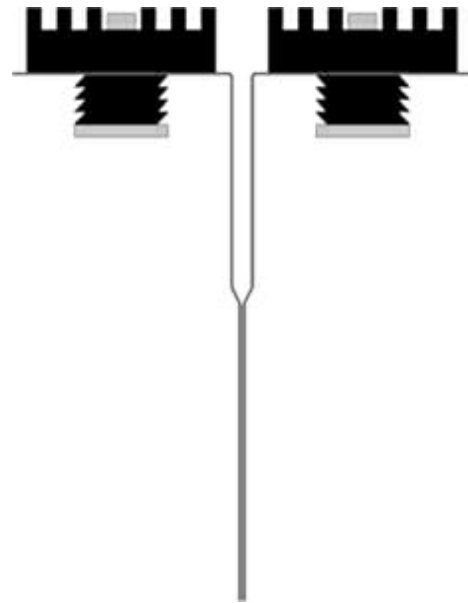
# RSIC-DC04X2™ RESILIENT SOUND ISOLATION CLIP

## RSIC-DC04X2

### *RSIC Resilient Sound Isolation Decouple Clip*

The RSIC-DC04™ and RSIC-DC04X2™ are very versatile products. The most common use is the decoupling of wall systems. The design of the RSIC-DC04™ can be used in new construction or retrofit. The RSIC-DC04X2™ is twice as strong as the RSIC-DC04™ for use when heavy items need to be acoustically decoupled for noise isolation. Below are some examples of the possible uses for the RSIC-DC04X2™ Acoustic Decoupling Clips

- Dropped Ceiling
- Decoupled connector for isolating walls built within another wall
- Shower Pipe / Plumbing Isolator
- Electrical Box or Ceiling Fan Isolators



Acoustical Surfaces, Inc.  
A Master Distributor for  
PAC INTERNATIONAL, INC.



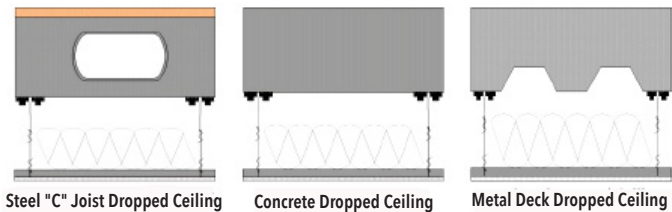
**ACOUSTICAL | SURFACES, INC.**

*Celebrating Over 40 Years - SOUNDPROOFING, ACOUSTICS, NOISE & VIBRATION SPECIALISTS!*  
952.448.5300 | 800.448.0121 | sales@acousticalsurfaces.com | www.acousticalsurfaces.com

PAGE 1

# RSIC-DC04X2™ RESILIENT SOUND ISOLATION CLIP

## RSIC-DC04X2



Steel "C" Joist Dropped Ceiling    Concrete Dropped Ceiling    Metal Deck Dropped Ceiling



Wood "1" Joist Dropped Ceiling    Wood Joist Dropped Ceiling    Wood Open Web Joist Dropped Ceiling

### APPLICATIONS

Wood, steel, metal deck, concrete, apartment, condo, commercial, retail, recording studio, home theater, commercial theater, conference rooms.

### MADE IN THE USA

Yes

### ACOUSTICAL DESIGN LOAD

72 Lbs.

### TOTAL DEFLECTION

3 mm

### DOUBLE DEFLECTION

Yes

### MADE WITH RECYCLED CONTENT

Yes

### CRYO LOW VOC TREATED

Yes

### ADJUSTABLE

Yes

### CAVITY MIN

4-1/2"

### CAVITY MAX

Var.

### ADJUSTABLE LIMIT

Var.

### USE ON CEILINGS

Yes

### USE ON WALLS

Yes

### NEW CONSTRUCTION

Yes

### RETRO FIT

Yes

Additional Information Can be Found at:

[https://www.acousticalsurfaces.com/rsic\\_clips/rsic\\_dc04x2.htm](https://www.acousticalsurfaces.com/rsic_clips/rsic_dc04x2.htm)



**ACOUSTICAL | SURFACES, INC.**

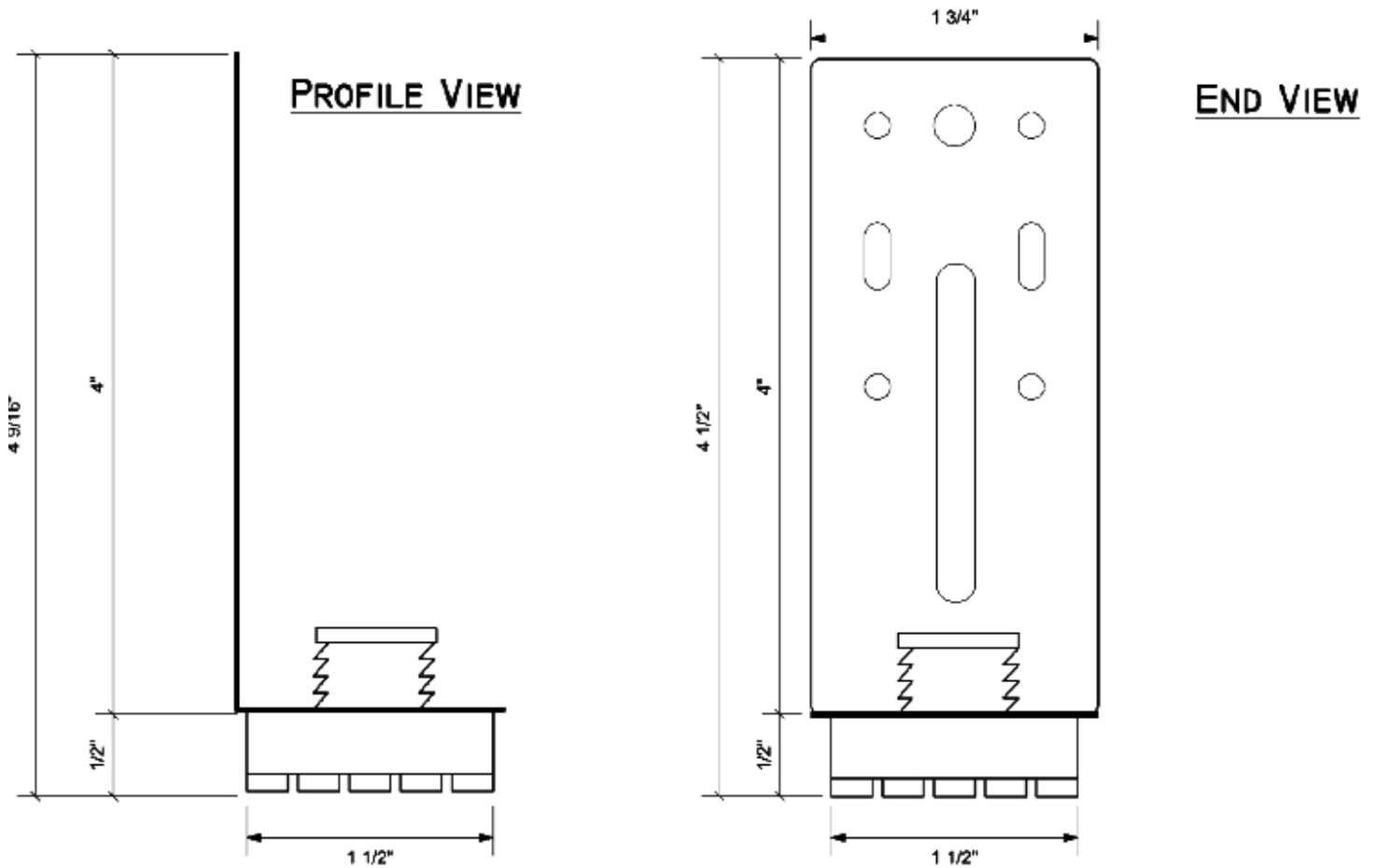
PAGE 2

*Celebrating Over 40 Years - SOUNDPROOFING, ACOUSTICS, NOISE & VIBRATION SPECIALISTS*

952.448.5300 | 800.448.0121 | sales@acousticalsurfaces.com | www.acousticalsurfaces.com

# RSIC-DC04X2™ RESILIENT SOUND ISOLATION CLIP

## RSIC-DC04X2 Clip Dimensions



**STOP NOISE**

**ACOUSTICAL** | SURFACES, INC.

PAGE 3

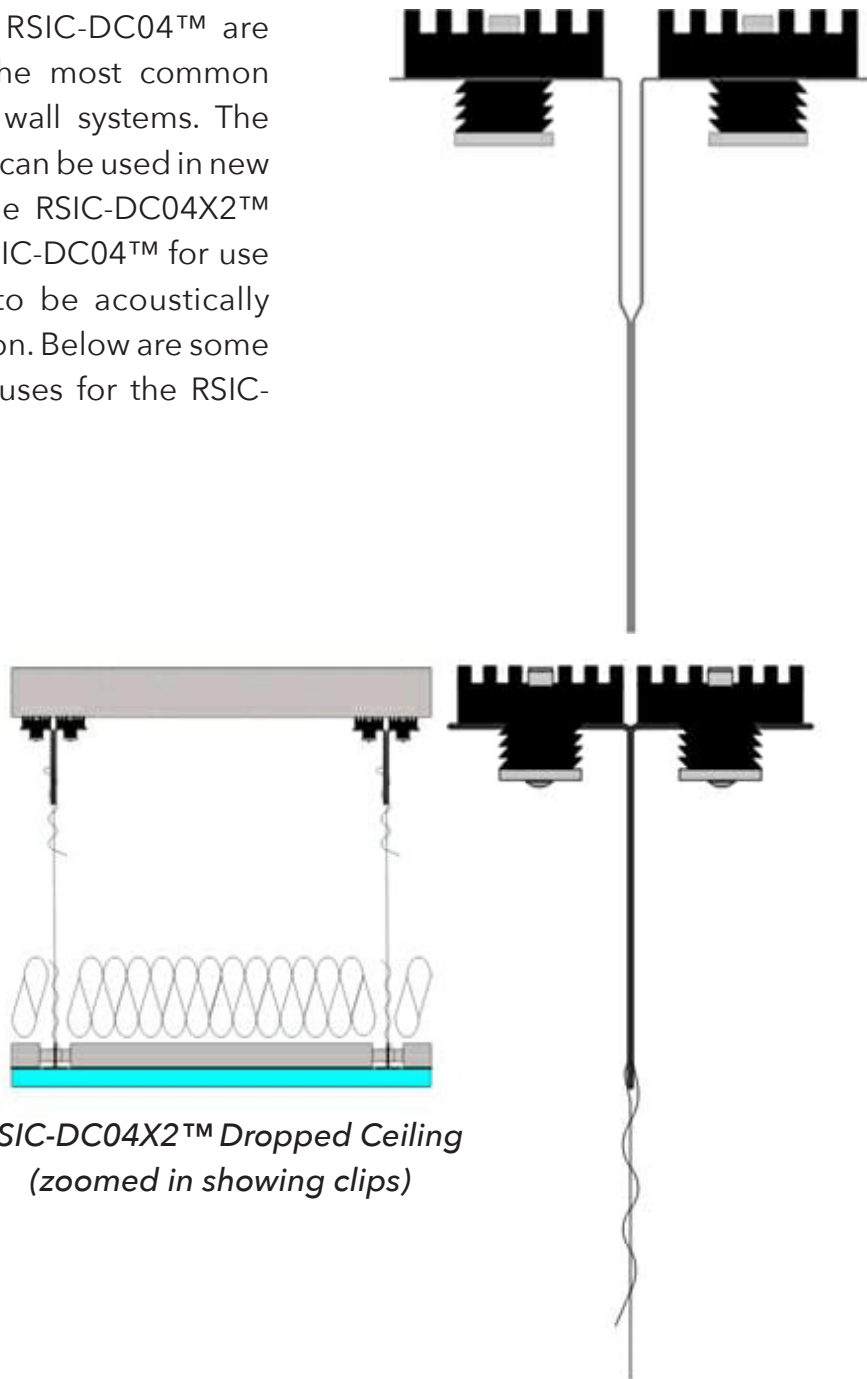
*Celebrating Over 40 Years - SOUNDPROOFING, ACOUSTICS, NOISE & VIBRATION SPECIALISTS!*  
952.448.5300 | 800.448.0121 | sales@acousticalsurfaces.com | www.acousticalsurfaces.com

# RSIC-DC04X2™ RESILIENT SOUND ISOLATION CLIP

## RSIC-DC04X2 – Dropped Ceiling & Mechanical Mounting

### *RSIC Resilient Sound Isolation Decouple Clip*

The RSIC-DC04X2™ and RSIC-DC04™ are very versatile products. The most common use is the decoupling of wall systems. The design of the RSIC-DC04™ can be used in new construction or retrofit. The RSIC-DC04X2™ is twice as strong as the RSIC-DC04™ for use when heavy items need to be acoustically decoupled for noise isolation. Below are some examples of the possible uses for the RSIC-DC04™.



*RSIC-DC04X2™ Dropped Ceiling  
(zoomed in showing clips)*

**STOP NOISE**

**ACOUSTICAL | SURFACES, INC.**

PAGE 4

*Celebrating Over 40 Years - SOUNDPROOFING, ACOUSTICS, NOISE & VIBRATION SPECIALISTS!*  
952.448.5300 | 800.448.0121 | sales@acousticalsurfaces.com | www.acousticalsurfaces.com

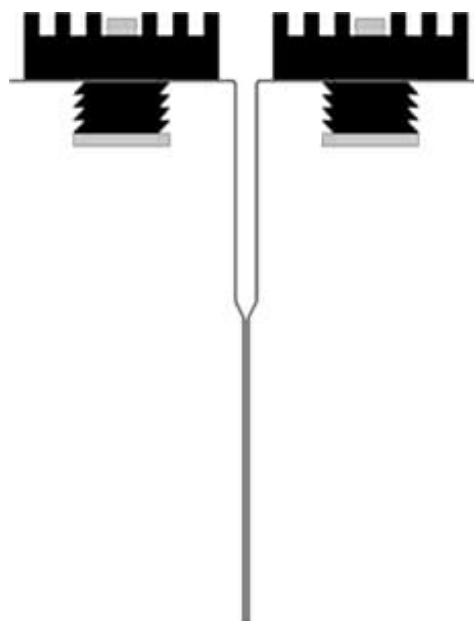
# RSIC-DC04X2™ RESILIENT SOUND ISOLATION CLIP

## RSIC-DC04X2 – Low Profile Wall Systems

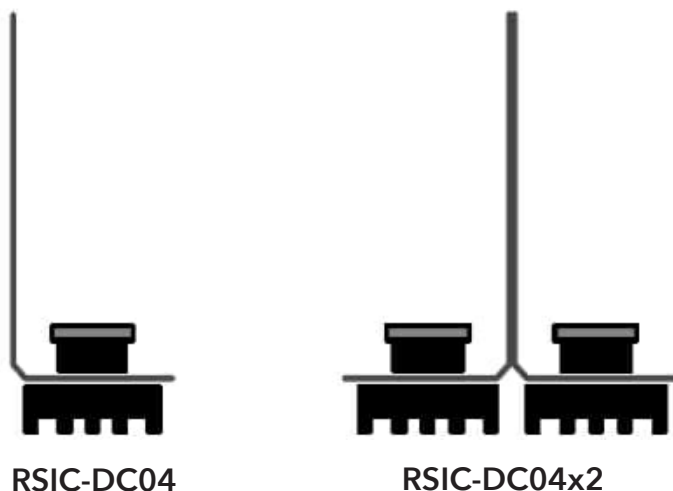
### *Decoupled Connector for Isolating Walls Built within Another Wall*

The RSIC-DC04X2™ low profile wall system has been developed to provide a low profile, high performance, noise control system. The RSIC-DC04™ or the RSIC-DC04X2™ are used to support the studs in a wall or joists in a ceiling system.

These systems are adjustable to allow for a low profile (1/2" to 2") separation. The RSIC-DC04™ and RSIC-DC04X2™ clips are designed to support additional studs (in walls), or joists (in ceilings) separate from the structural framing members.



**Note:** The RSIC-DC04™ and RSIC-DC04X2™ are not designed to carry structural loads. The RSIC-DC04™ and RSIC-DC04x2™ are intended to support the loads of gypsum board and uniform loads only. Focused loads and point loads must be engineered by a licensed professional.



**ACOUSTICAL | SURFACES, INC.**

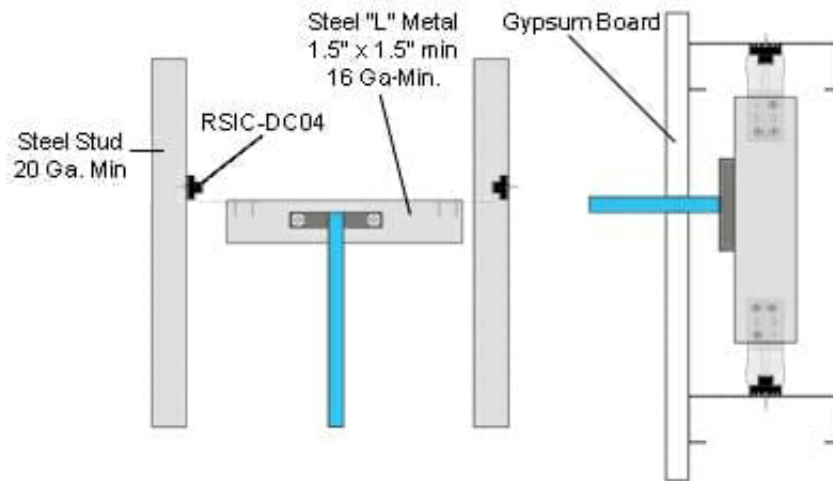
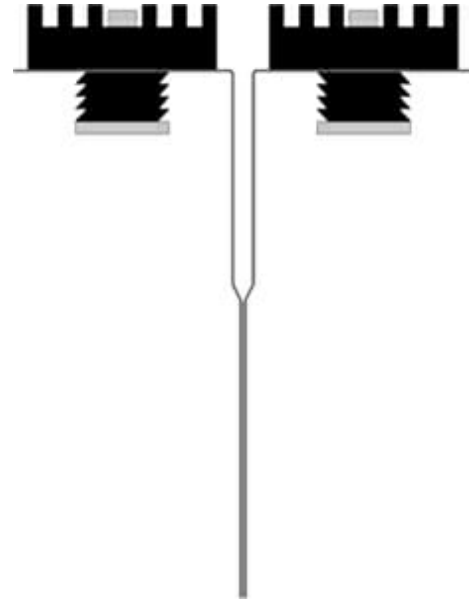
*Celebrating Over 40 Years - SOUNDPROOFING, ACOUSTICS, NOISE & VIBRATION SPECIALISTS!*  
952.448.5300 | 800.448.0121 | sales@acousticalsurfaces.com | www.acousticalsurfaces.com

# RSIC-DC04X2™ RESILIENT SOUND ISOLATION CLIP

## RSIC-DC04X2 – Shower/Plumbing Isolator Decoupler Clip

### *Shower Pipe/Plumbing Isolator*

The RSIC-DC04™ and RSIC-DC04X2™ are very versatile products. The most common use is the decoupling of wall systems. The design of the RSIC-DC04™ can be used in new construction or retrofit. The RSIC-DC04X2™ is twice as strong as the RSIC-DC04™ for use when heavy items need to be acoustically decoupled for noise isolation. Below are some examples of the possible uses for the RSIC-DC04™.



**ACOUSTICAL | SURFACES, INC.**

PAGE 6

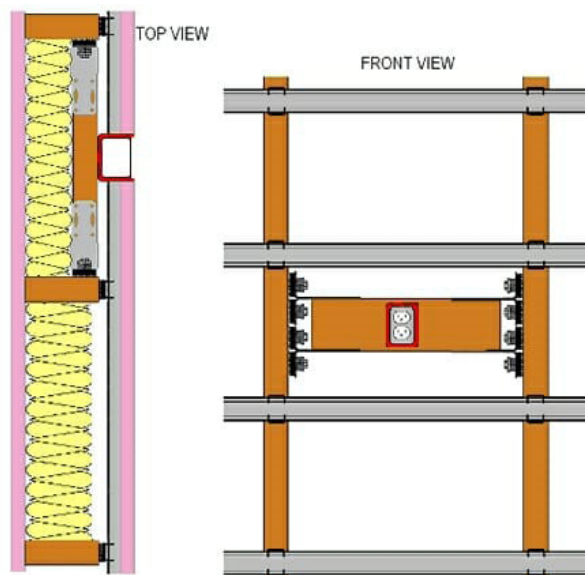
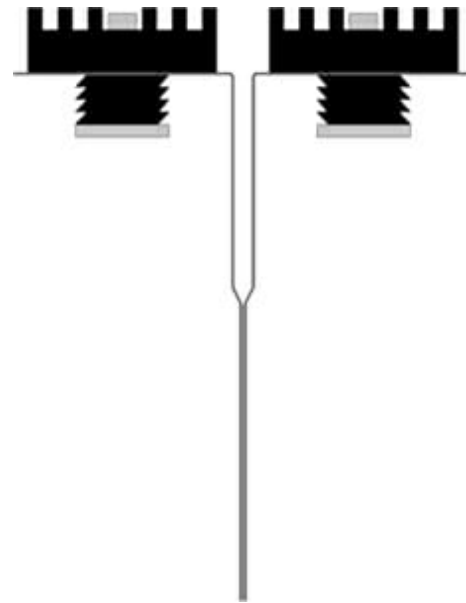
*Celebrating Over 40 Years - SOUNDPROOFING, ACOUSTICS, NOISE & VIBRATION SPECIALISTS!*  
952.448.5300 | 800.448.0121 | sales@acousticalsurfaces.com | www.acousticalsurfaces.com

# RSIC-DC04X2™ RESILIENT SOUND ISOLATION CLIP

## RSIC-DC04X2 – Electrical Boxes/ Ceiling Mounted Lights Decouple Clip

### *Electrical Box or Ceiling Fan Isolators*

The RSIC-DC04X2™ and RSIC-DC04™ are very versatile products. The most common use is the decoupling of wall systems. The design of the RSIC-DC04™ can be used in new construction or retrofit. The RSIC-DC04X2™ is twice as strong as the RSIC-DC04™ for use when heavy items need to be acoustically decoupled for noise isolation. Below are some examples of the possible uses for the RSIC-DC04™.



*Wall Electrical Box Isolation*



**ACOUSTICAL** | SURFACES, INC.

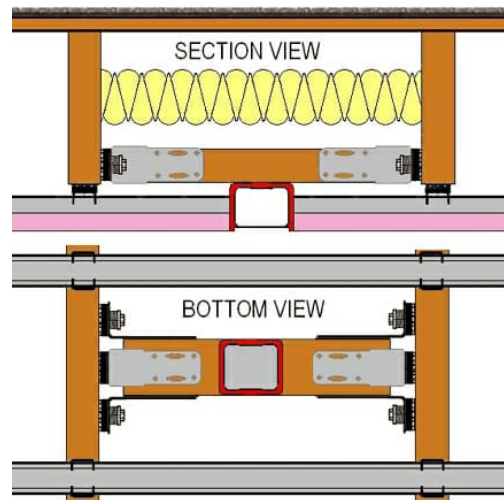
PAGE 7

*Celebrating Over 40 Years - SOUNDPROOFING, ACOUSTICS, NOISE & VIBRATION SPECIALISTS!*  
952.448.5300 | 800.448.0121 | sales@acousticalsurfaces.com | www.acousticalsurfaces.com

# RSIC-DC04X2™ RESILIENT SOUND ISOLATION CLIP

## RSIC-DC04 – Electrical Boxes/ Ceiling Mounted Lights Decouple Clip Cont.

### *Electrical Box or Ceiling Fan Isolators*



*216LB Ceiling Fan - Electrical Box Isolation*

*Ceiling fan, Electrical box, or Mechanical mount isolation. Acoustical weight capacity 288 lbs.*



**ACOUSTICAL | SURFACES, INC.**

PAGE 8

*Celebrating Over 40 Years - SOUNDPROOFING, ACOUSTICS, NOISE & VIBRATION SPECIALISTS!*  
952.448.5300 | 800.448.0121 | sales@acousticalsurfaces.com | www.acousticalsurfaces.com