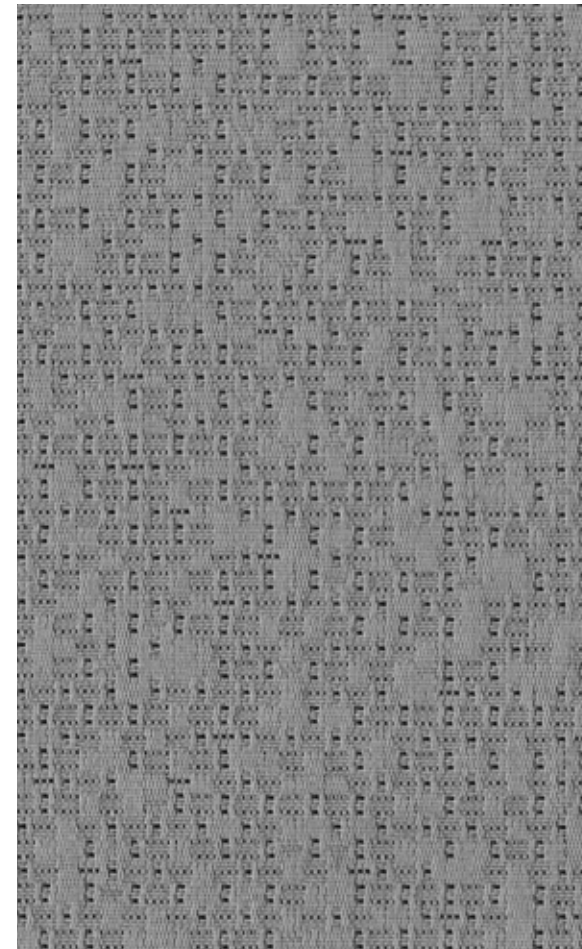


Netiquette 1241

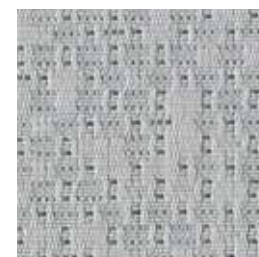
PANEL | ACOUSTIC

PANEL | ACOUSTIC

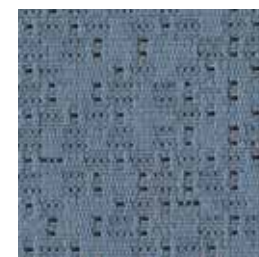
Netiquette 1241



Schema
1295



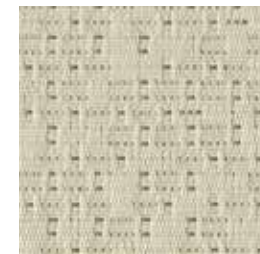
Analog
1294



Pixel
1300



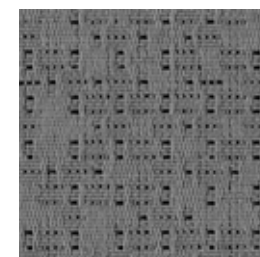
Bitmap
1291



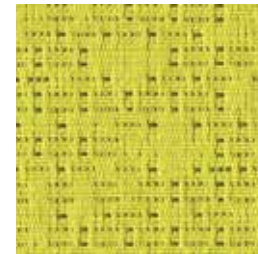
Chipset
1292



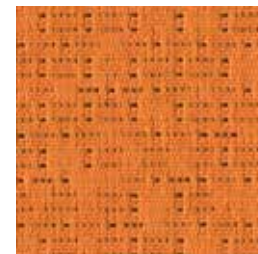
Dashboard
1293



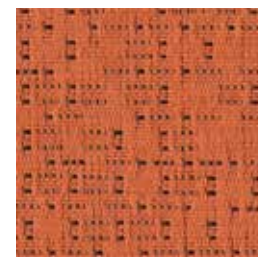
Inkjet
1296



Refresh
1299



Gamma
1298



Vector
1297

Specifications

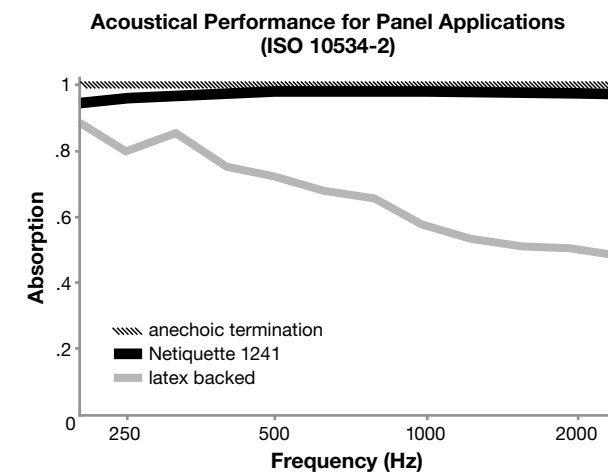
Content	68% polyester 32% post-consumer recycled polyester
Weight	9.6 ± 1.0 oz./lin. yd.
Width	66" min. useable
Repeat	7.25" vertical 14" horizontal
Treatment	polyester binder

Cleaning Code

Standard Care Label W-S. Clean with water based cleaning agents, foam or pure, water free solvents. Vacuuming or light brushing is recommended to prevent dust and soil buildup. May also be disinfected with hydrogen peroxide, alcohol, and quaternary ammonium (quat) based cleaners.

Acoustical Performance

The plot below summarizes impedance tube measurements of absorption of an anechoic termination and various fabrics in front of the anechoic termination.



NRC of anechoic termination	1.00
NRC of fabric in front of anechoic termination	.95

Performance

- Colorfastness to Light (AATCC 16.3 Option 3)
Grade 4 min. at 40 hours
- Colorfastness to Crocking (AATCC 8)
Grade 4 min. dry & Grade 3 min. wet
- Breaking Strength (ASTM D5034)
250 lbf warp and 130 lbf fill
- Flammability (ASTM E84)
Class I or A

Sustainability



Miscellaneous

Proudly woven in North America supporting our local communities.

Application testing of this product is recommended. Colors may vary between dye lots. This is a directional fabric.

Visit guilfordofmaine.com for samples.

This pattern is included in the underwriters laboratory panel fabric recognition program. Additional testing of this U.L. recognized component fabric is not required on approved panels from participating manufacturers.

*Certification Marks owned by the Association for Contract Textiles, Inc.

† Not available in USA