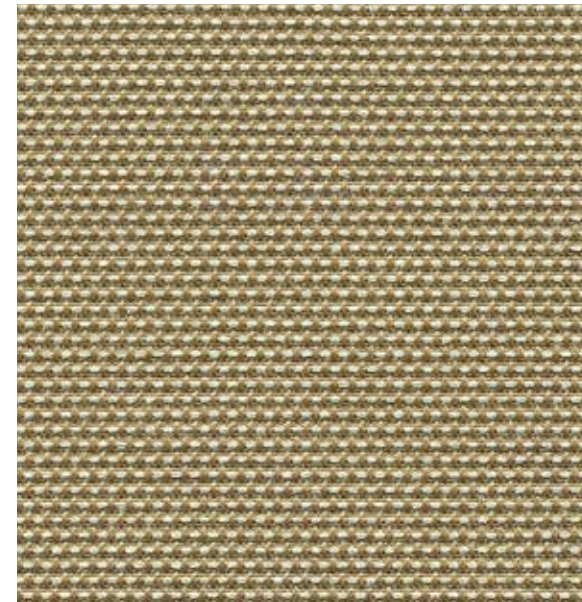


Jane 9085

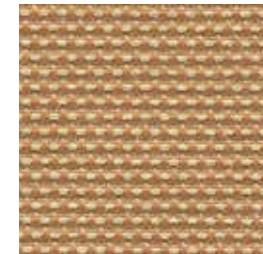
MULTI-PURPOSE | UPHOLSTERY
PANEL | ACOUSTIC

MULTI-PURPOSE | UPHOLSTERY
PANEL | ACOUSTIC

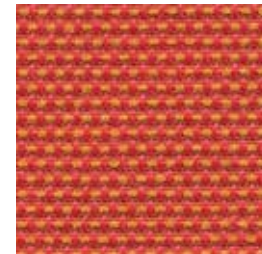
Jane 9085



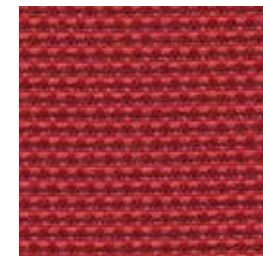
Natural
4061



Gold
4020



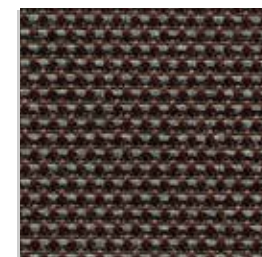
Persimmon
4050



Pomegranate
4081



Chive
4070



Steel
4100



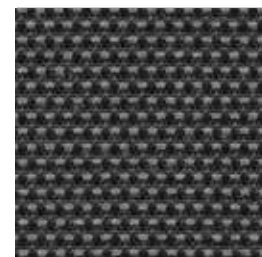
Blueberry
4091



Ultramarine
4030



Lapis
4041



Jet
4040

Specifications

| | |
|-----------|--------------------------------------|
| Content | 100% pre-consumer recycled polyester |
| Weight | 9.7 ± 0.5 oz./lin. yd. |
| Width | 54" min. useable |
| Repeat | none |
| Treatment | BLOCKaide® stain repellent |

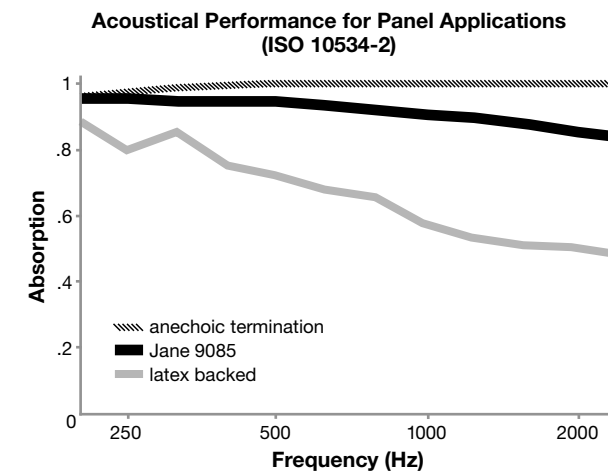
Cleaning Code

Standard Care Label W-S. Clean with water based cleaning agents, foam or pure, water free solvents. Vacuuming or light brushing is recommended to prevent dust and soil buildup.

Bleach Cleanable - May be cleaned with a 10% bleach-to-water solution. Rinse well after cleaning. May also be disinfected with hydrogen peroxide, alcohol, and quaternary ammonium (quat) based cleaners.

Acoustical Performance

The plot below summarizes impedance tube measurements of absorption of an anechoic termination and various fabrics in front of the anechoic termination.



| | |
|--|------|
| NRC of anechoic termination | 1.00 |
| NRC of fabric in front of anechoic termination | .90 |

Performance

Colorfastness to Light (AATCC 16.3 Option 3)
Grade 4 min. at 40 hours

Colorfastness to Crocking (AATCC 8)
Grade 4 min. dry & Grade 3 min. wet

Breaking Strength (ASTM D5034)
200 lbf min. warp and 130 lbf min. fill

Seam Slippage (ASTM D4034)
50 lbf min. warp and fill

Pilling Resistance (ASTM D3511)
Class 4 min.

Flammability
**CA Technical Bulletin 117-2013 Section 1
ASTM E84 Class I or A**

Abrasion (ASTM D4157)
50,000 double rubs min. cotton duck

Sustainability

100% recycled and recyclable
Terratec is a registered trademark of Duvaltex

facts
Compliant

Miscellaneous

Proudly woven in North America supporting our local communities.

Application testing of this product is recommended.
Colors may vary between dye lots. This is a directional fabric.

Visit guilfordofmaine.com for samples.

This pattern is included in the underwriters laboratory panel fabric recognition program. Additional testing of this U.L. recognized component fabric is not required on approved panels from participating manufacturers.

*Certification Marks owned by the Association for Contract Textiles, Inc.