

Spinel 3582

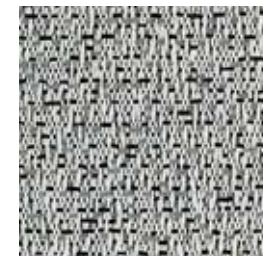
Spinel 3582



Opal
011

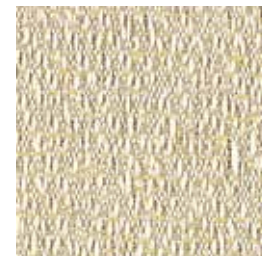


Perlite
080



Alabaster
058

Petoskey
056



Sandstone
050



Granite
015



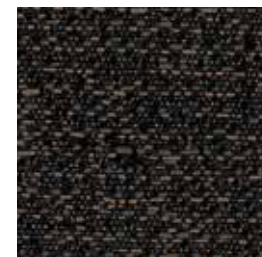
Tiger Eye
030



Smoky Quartz
031



Quarry
091



Obsidian
021



Slate
130

Specifications

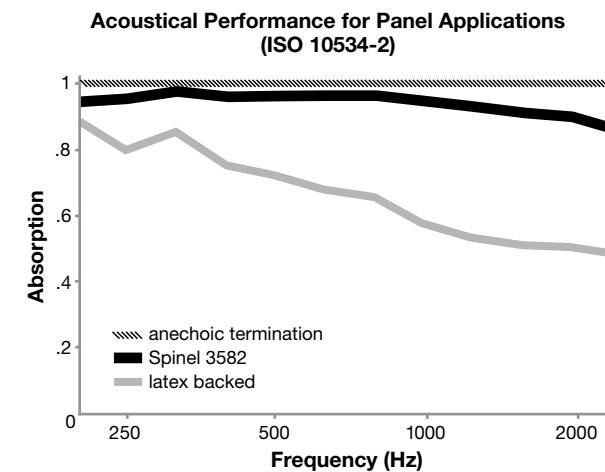
Content	68% pre-consumer recycled polyester 32% post-consumer recycled polyester
Weight	11.8 ± 1.0 oz./lin. yd.
Width	66" min. useable
Repeat	16.5" vertical and horizontal

Cleaning Code

Standard Care Label W-S. Clean with water based cleaning agents, foam or pure, water free solvents. Vacuuming or light brushing is recommended to prevent dust and soil buildup. May also be disinfected with hydrogen peroxide, alcohol, and quaternary ammonium (quat) based cleaners.

Acoustical Performance

The plot below summarizes impedance tube measurements of absorption of an anechoic termination and various fabrics in front of the anechoic termination.



NRC of anechoic termination	1.00
NRC of fabric in front of anechoic termination	.95

Performance

- Colorfastness to Light (AATCC 16.3 Option 3)
Grade 4 min. at 40 hours
- Colorfastness to Crocking (AATCC 8)
Grade 4 min. dry & Grade 3 min. wet
- Breaking Strength (ASTM D5034)
220 lbf min. warp and 90 lbf min. fill
- Flammability (ASTM E84)
Class I or A

Sustainability

- 100% recycled and recyclable**
Terratex is a registered trademark of Duvaltex
- facts™ Silver**

Miscellaneous

Proudly woven in North America supporting our local communities.

Application testing of this product is recommended. Colors may vary between dye lots. This is a directional fabric.

Visit guilfordofmaine.com for samples.

This pattern is included in the underwriters laboratory panel fabric recognition program. Additional testing of this U.L. recognized component fabric is not required on approved panels from participating manufacturers.

*Certification Marks owned by the Association for Contract Textiles, Inc.