



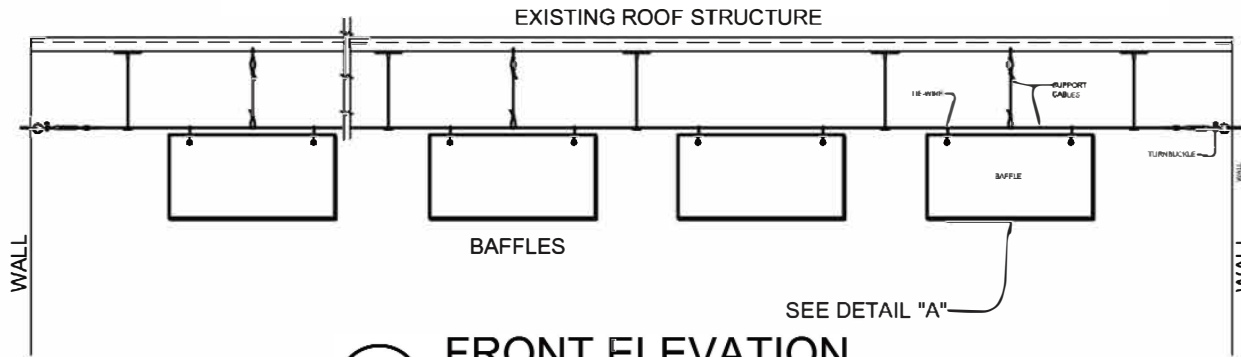
STOP NOISE

ACOUSTICAL

SURFACES INC.

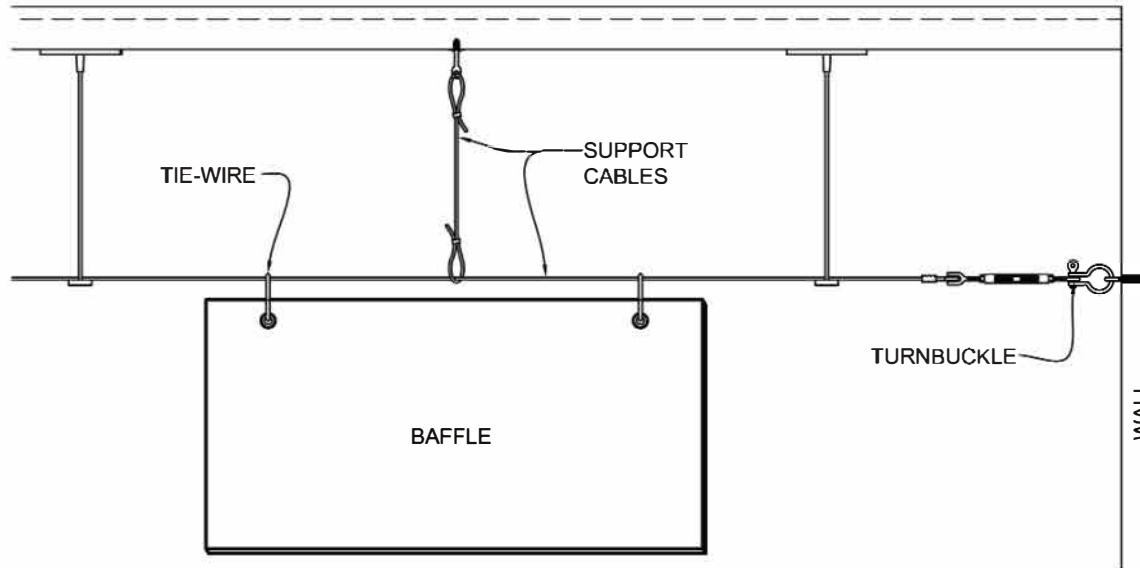
Sound Solutions for Over 40 Years

Soundproofing | Acoustics | Noise & Vibration Control



FRONT ELEVATION

SCALE: NA



ATTACHMENT DETAIL

SCALE: NA

NOTES:

- 1) SECURE ANCHORS AT BOTH ENDS INTO WALL. TIGHTEN CABLE USING TURNBUCKLES. ALL ABOVE HARDWARE AVAILABLE FROM ASI EXCEPT WALL ANCHORS. ON EXTREMELY LONG RUNS OF CABLE, INTERMEDIATE VERTICAL CABLE SUPPORT MAY BE REQUIRED.
- 2) TIE-WIRE TO BE SNUGGED UP TIGHT TO CABLE SO TO PREVENT SLIPPAGE.