



# Acoustical Surfaces, Inc.

SOUNDPROOFING, ACOUSTICS, NOISE & VIBRATION CONTROL SPECIALISTS

123 Columbia Court North • Suite 201 • Chaska, MN 55318  
 (952) 448-5300 • Fax (952) 448-2613 • (800) 448-0121

Email: [sales@acousticalsurfaces.com](mailto:sales@acousticalsurfaces.com)  
 Visit our Website: [www.acousticalsurfaces.com](http://www.acousticalsurfaces.com)

We Identify and **S.T.O.P.** Your Noise Problems

Filename

Test#11 - 2 PEPP

## ASTM C423 – Sound Absorption

Project Folder

Client

Product

Model #

Quantity

Comment

Acoustical Surfaces

Absorption Material

1

2" PEPP with 24" spacing

Sample Size – Wt

Sample Description #

Type A Mounting

95.0 in x 95.5 in x – 0 lbs.

8 Panels – 2" PEPP Arranged in 2 x 4 Fashion : with 24" spacing between all panels :

Time Stamp

Wed. Oct. 30, 2002 – 1:25 PM

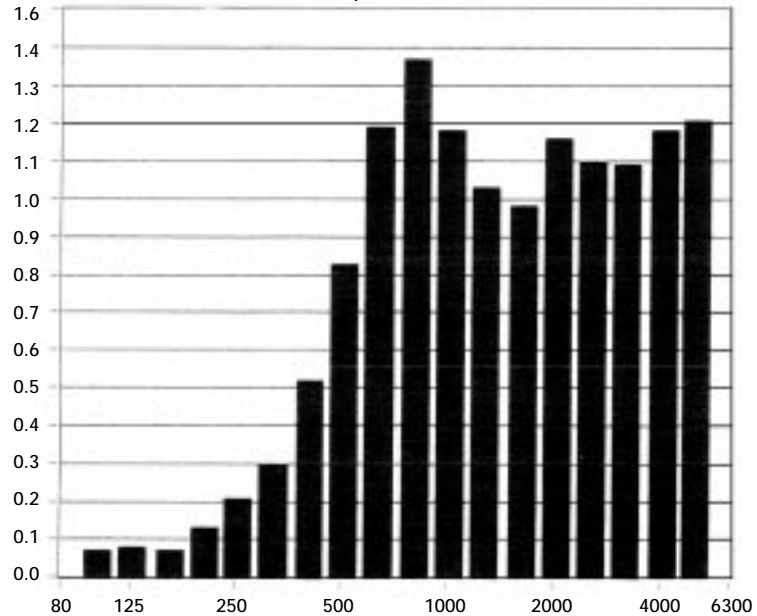
Total Sample Area

63.0 ft<sup>2</sup>

F (Hz)	Absorption Coefficient	Absorption (Sabins)*
100	0.07	4.47
125	0.08	5.34
160	0.07	4.53
200	0.13	7.97
250	0.21	13.41
315	0.30	19.07
400	0.52	32.67
500	0.83	52.02
630	1.19	75.18
800	1.37	86.53
1000	1.18	74.61
1250	1.03	64.66
1600	0.98	61.65
2000	1.16	73.19
2500	1.10	69.01
3150	1.09	68.62
4000	1.18	74.23
5000	1.21	76.05

Absorption Coefficient

### Sound Absorption Coefficients



Temp (\*C)

R.H. (%)

ATM (mbar)

22.0

63

990

\*Total absorption based on 63.0 ft<sup>2</sup>

$$SAA = 0.83 \quad NRC = 0.85$$