



# Acoustical Surfaces, Inc.

SOUNDPROOFING, ACOUSTICS, NOISE & VIBRATION CONTROL SPECIALISTS

123 Columbia Court North • Suite 201 • Chaska, MN 55318  
 (952) 448-5300 • Fax (952) 448-2613 • (800) 448-0121

Email: [sales@acousticalsurfaces.com](mailto:sales@acousticalsurfaces.com)  
 Visit our Website: [www.acousticalsurfaces.com](http://www.acousticalsurfaces.com)

We Identify and **S.T.O.P.** Your Noise Problems

Filename

Test#13 - 1 PEPP

## ASTM C423 – Sound Absorption

Project Folder:  Client:

Product:  Model #:  Quantity:  Comment:

Sample Size – Wt

72.0 in x 95.0 in x – 0 lbs.

Sample Description #

6 Panels – 1" PEPP in 16" airspace box : Type E mounting, 6 panels. :

Time Stamp

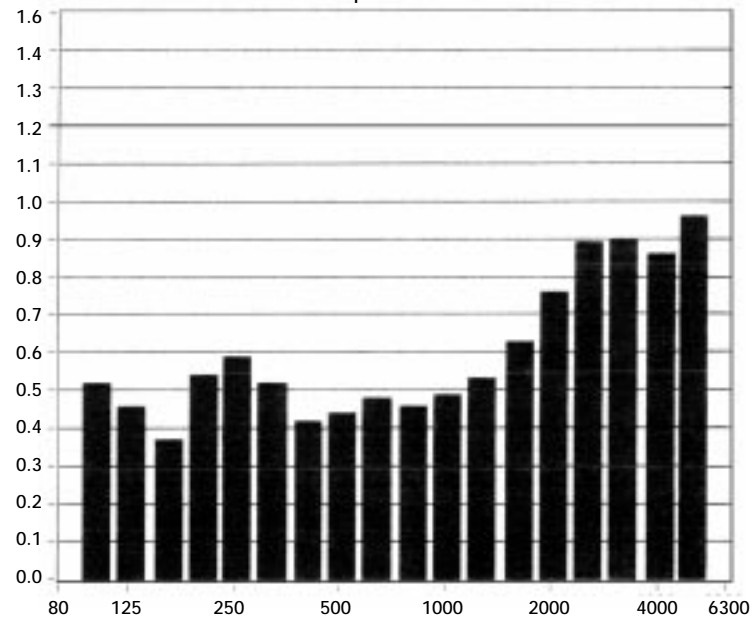
Wed. Oct. 30, 2002 – 2:26 PM

Total Sample Area

F (Hz)	Absorption Coefficient	Absorption (Sabins)*
100	0.52	24.50
125	0.46	22.02
160	0.37	17.62
200	0.54	25.51
250	0.59	27.84
315	0.52	24.52
400	0.42	20.17
500	0.44	20.99
630	0.48	22.76
800	0.46	21.70
1000	0.49	23.40
1250	0.53	25.17
1600	0.63	29.99
2000	0.76	36.14
2500	0.89	42.38
3150	0.90	42.84
4000	0.86	40.68
5000	0.96	45.66

Absorption Coefficient

Sound Absorption Coefficients



Temp (\*C)      R.H. (%)      ATM (mbar)

\*Total absorption based on 47.5 ft²

$$SAA = 0.56 \quad NRC = 0.55$$