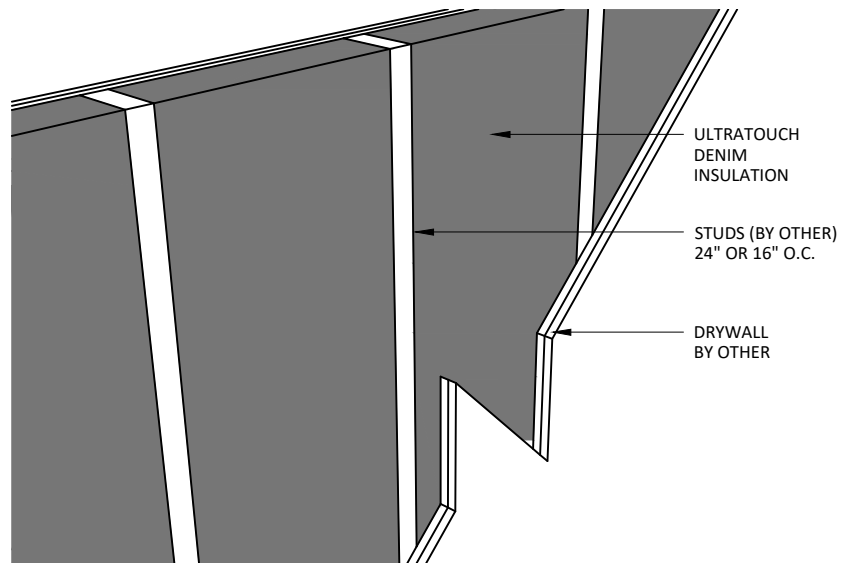


UltraTouch Denim Insulation Installation

Because ASI insulation is compressed for shipping purposes, give it a shake prior to installing. This will help accelerate the natural rebounding properties of the fibers. Depending on climate and environment conditions, full rebound may take several days.

Install insulation between studs by fitting each batt firmly into place. If building codes require a vapor barrier, it should be applied towards the living area. The insulation should fit snugly between the framing. In the event that the construction does not allow the batt to friction fit into wall, use a staple or nail to secure the top of each batt (or wherever necessary) so the product does not fall to the bottom of the wall cavity. Cut or tear the insulation to fit snugly around obstructions such as plumbing, vent lines, and electrical boxes. Use any left over pieces to fill small openings around windows and doors. The insulation does not necessarily have to fill the entire cavity although the thicker the product, the more acoustical absorption will take place. It does not matter where in the cavity the UltraTouch is placed in regards to being closer to one wall than another, it will have the same acoustical performance either way.

For exterior walls, most municipalities will require a vapor barrier to be installed. The question of appropriate vapor barrier usage is not determined by ASI. This issue depends entirely on your local climate and your local building codes. Please contact your local building code office and inquire about the recommendation for your area. If a vapor barrier is required, ASI recommends the use of a permeable barrier. A permeable barrier will allow your walls to "breathe" while still stopping moisture transfer.



Walls

ASI insulation is a friction fit product. This means that they are slightly oversized for standard wall cavities. To install, insert the batt between the studding and tuck it in to ensure a tight fit. Approximately 30% of the batts in each bag of UltraTouch are perforated for easy tearing to fit "off-size" cavities.

Ceilings

ASI Insulation can be layered to achieve higher R-Values in ceiling applications. It is best to alternate the direction of the batts in each layer. UltraTouch can be secured to the joists using either wire or a mesh. This will ensure the batts remain in place until drywall has been installed.

Floors/Crawl Spaces

ASI Insulation is an effective option for insulating floors and crawlspaces. The insulation should be secured to floor joists or crawl space cavities in the same manner as ceiling applications, using either mesh or wire support system. For crawlspaces specifically, a system of vapor barriers is recommended. The bare ground should be covered with a barrier as well as applied to the cavities before the insulation is installed (facing the warm side of the subfloor).



123 Columbia Court North, Chaska,
Minnesota 55318 P. 800.527.6253

ULTRATOUCH DENIM INSULATION INSTALLATION INSTRUCTIONS

SCALE: AS NOTED

LAST REVISED: 4/13/2020

DRAWN BY: BH

SHEET NUMBER

1

DO NOT SCALE DRAWING. FIGURED DIMENSIONS ARE TO BE FOLLOWED. READ THIS DRAWING IN CONNECTION WITH GENERAL ARCHITECTURAL PLANS, STRUCTURAL PLANS, AND OTHER RELATED DRAWINGS. THESE DRAWINGS REPRESENT ASI'S UNDERSTANDING AND INTERPRETATION OF THE ARCHITECTURAL DRAWINGS AND HOW ASI PRODUCTS RELATE TO THE PROJECT. COPYRIGHT ASI © 2020